

GEORGIA COMMITTEE ON TRAUMA EXCELLENCE

SUMMARY

2011 – 2013

The Georgia Committee on Trauma Excellence (GCTE) is one of the longest standing organizations committed to providing and monitoring quality in trauma care to those who live, work and travel through the State of Georgia. The GCTE was established over twenty years ago, and is comprised of trauma program managers, directors and registrars from the states designated trauma centers as well as health care providers from non-designated trauma centers who are interested in improving trauma care.

The group has had a rich and long standing history of collaboration with the Offices of Emergency Medical Services and Trauma, the states regulatory agency for pre-hospital and hospital trauma care. The GCTE has recently established a relationship with the Georgia Trauma Care Network Commission and has been recognized as an official subcommittee of the commission.

In 2011, through a self-assessment process utilizing the SWOT analysis framework, it was recognized that with the expansion and stabilization of the state trauma network it was necessary for the GCTE to establish a more formalized structure and process for conducting business. Through the collaborative leadership of Greg Pereira, (Trauma Program Manager at Children's Healthcare of Atlanta) the GCTE chair, Elaine Frantz, (Director of Trauma Services at Memorial Health), GTCNC Commissioner and liaison to GCTE and Dr. Regina Medeiros (Director of Trauma Services at Regents Health System) the incoming GCTE chair a draft structure and process was developed and implemented.

An executive committee was established, bylaws were written and seven subcommittees were created that reflected the mission and vision of the GCTE: The Registry Subcommittee; Injury Prevention Subcommittee; Performance Improvement Subcommittee; Specialty Care Subcommittee; Resources Development Subcommittee; Special Projects Subcommittee and the Education Subcommittee. Each subcommittee was led by a chair who was appointed by the GCTE chair. The subcommittees were expected to establish goals, objectives and a timeline for goals completion. They were to give a progress report to the full GCTE during the full member meetings which are held quarterly.

GEORGIA COMMITTEE ON TRAUMA EXCELLENCE SUMMARY

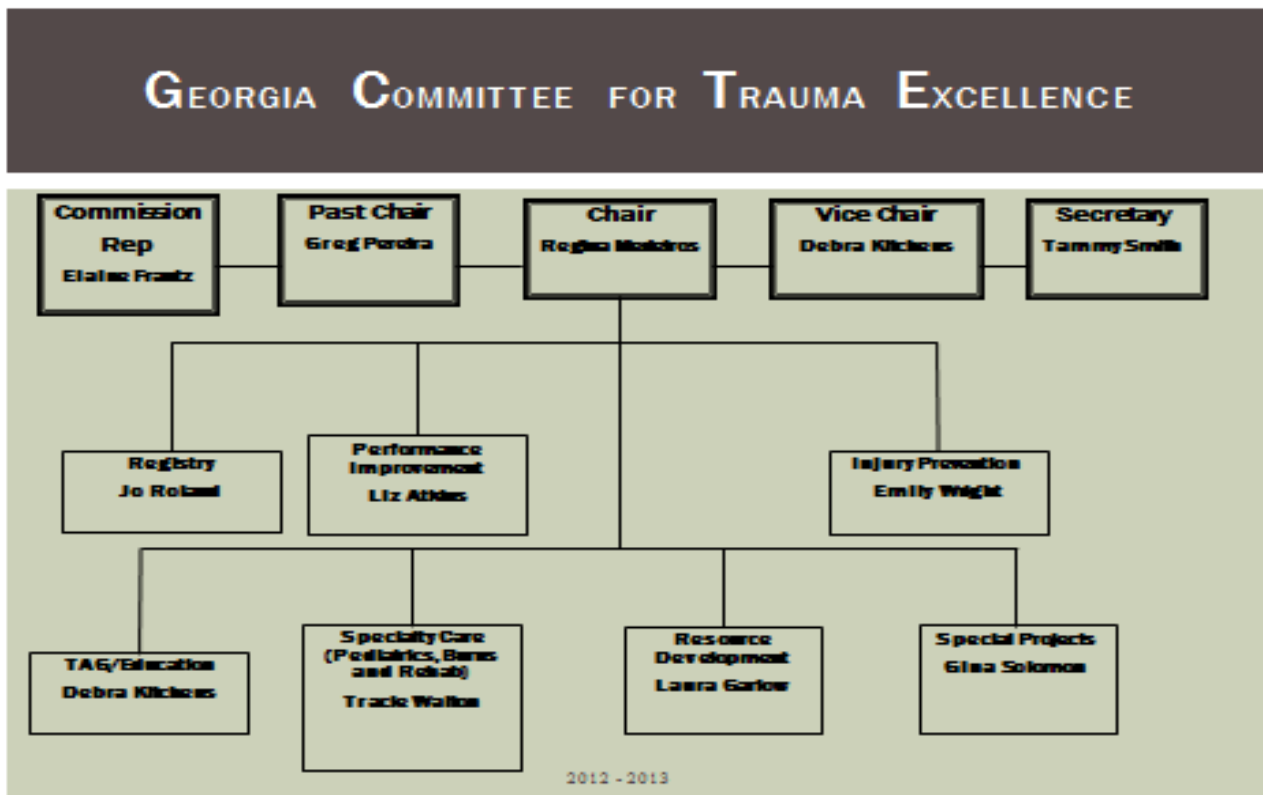


Figure 1

Figure 1 represents the new structure of the GCTE. This structure and process has proven effective since its implementation in 2011. Each committee has been working to meet their goals and objectives and the productivity and efficiency of the group has increased.

PERFORMANCE IMPROVEMENT AND REGISTRY

The PI subcommittee's goal was to develop performance improvement initiatives based on information obtained from registry data and benchmark best practices throughout the state. The Registry subcommittee's goal was to establish the standardization of registry data to ensure validation and compliance with TQIP, State and NTDB guidelines. Early on it was recognized that the registry and PI subcommittees were interdependent on each other in order to effectively meet their goals. Those committees joined together during the implementation phase and focused their efforts on registry data integrity and software enhancement. Over the two year time frame the committee has exceeded expectations. Georgia, in collaboration with Digital Innovations (DI), established a working group that created and implemented a customized trauma registry that met the needs of each individual center while maintaining the strict standards for participation in state wide PI and statistical trending as well as NTDB and TQIP participation. The new version of the software was launched in July of 2013. This is a

GEORGIA COMMITTEE ON TRAUMA EXCELLENCE

SUMMARY

hallmark achievement of the group and one that will allow us to move forward with statewide performance improvement initiatives with confidence in our data integrity and validity. The committee's next projects include the implementation, education and utilization of the DI Performance Improvement Module and the development of an external data validation process and tool for the state.

SPECIALTY CARE

The specialty care subcommittee encompasses the areas of burn, pediatric and rehabilitation. Key partners in the overall trauma system, this group met to identify gaps in linking these subspecialties into the overall system planning and development process. In addition, the group recognized the synergistic effect of combining their efforts on specialty outreach and education. One of the key accomplishments of this group has been the State's formal recognition of rehabilitation facilities as part of the state-wide trauma network. Rehabilitation facilities will be classified by their accreditations and the services provided. This group also formalized a partnership with EMS-C in order to minimize duplication of efforts across the state. The group assisted in the coordination and dissemination of a "Peds Readiness Survey" that was being done by EMS-C and they are creating a speaker list to assist in providing education for EMS staff in pediatrics during scheduled EMS-C events.

INJURY PREVENTION

The injury prevention (IP) subcommittee, utilizing data collected and analyzed by the State Office of Trauma and EMS, identified falls as their target area of concentration. The Georgia Trauma Registry number of fall cases for 2011 was 4,538; and a case fatality rate of 3.5%. In 2012, fall cases were 4,958 and a case fatality rate=3.7%. The trend demonstrated an increase both in incidence and case fatality rates. The subcommittee identified existing resources within the state that focused on falls and entered into a partnership with "*A Matter of Balance*" an evidence based fall prevention program. In June 2013, members of the IP subcommittee become master trainers in the Matter of Balance program. The Master Trainers will in turn train members of the GCTE in order to disseminate this program throughout the state. This training is scheduled to take place in January 2014. The training has been designed to ensure longevity and continuity. The training will consist of eight hours in total. When completed, GCTE members will be classified as lay leader volunteers. As such, members will be able to teach classes within their region. Trainings will occur on an ongoing basis to ensure there is adequate coverage to continue classes throughout the state.

GEORGIA COMMITTEE ON TRAUMA EXCELLENCE

SUMMARY

RESOURCE DEVELOPMENT SUBCOMMITTEE

This subcommittee focused its efforts on reviewing the existing body of resources available to trauma centers and trauma providers. From there, they were to identify gaps in those resources then update existing and create new resources to meet the needs of our expanding trauma system. It was a big undertaking but they were committed to the task. This committee works very closely with the Office of EMS and Trauma and through that collaboration has identified that both the Trauma Program Manager and Registry orientation resources were in need of updating. In addition, with the changes that have occurred in the designation and regulatory process it is necessary to create additional resources to ensure site visit success. Based on the Pre-Review Questionnaire and the Policies of OEMS&T the subcommittee has begun developing a manual for centers to utilize in preparation for their site visit. In addition, subcommittee members are also working with OEMS&T to development an information and resource packet for hospitals who are interested in joining the trauma network.

EDUCATION

The education subcommittee works in collaboration with our partner non-profit organization The Trauma Associates of Georgia (TAG). Together they oversee the organization and dissemination of trauma education throughout the state. Their primary focus includes the following courses:

- TNCC – The Trauma Nursing Core Course
- ENPC – The Emergency Nursing Pediatric Course
- RTTDC – The Rural Trauma Team Development Course
- ATCN – The Advanced Trauma Care for Nurses Course

In addition to the above listed courses the education subcommittee has coordinated a pilot TCAR course (Trauma Care after Resuscitation Course), a AAAM AIS Coding Course and a TOPIC Course. This upcoming year the Education Subcommittee, in collaboration with the State Office of Trauma and EMS, will be hosting a Site Surveyor Training Course presented by the Trauma Center Associates of America and an ICD-10 course to prepare registries for the upcoming changes in coding. The Education subcommittee's partner organization TAG has worked with the Society of Trauma Nurses to purchase a scientifically based education program for trauma care providers which includes psychometrically tested exams to establish competencies. The next phase will be to determine the best way to disseminate this program and to assist designated trauma centers in implementing this program which will become a minimum standard for trauma education by the OEMS&T. The Education subcommittee has assisted in the education of over 400 trauma health care providers and that number grows daily.

GEORGIA COMMITTEE ON TRAUMA EXCELLENCE SUMMARY

SPECIAL PROJECTS

This subcommittee was created to handle any project or special situation that did not quite fit under any of the other subcommittee. The members of this committee work to ensure communication and coordination of projects and requests that come to the various trauma centers where commonality exists. Each state designated center receives funding from the Georgia Trauma Care Network Commission. From time to time there are reports or special studies that arise from the commission such as the Readiness Cost Survey. The Special Project group helps to disseminate information, training and FAQs related to this type of request. In addition they provide a clearinghouse for our annual trauma center contract review.

As we transition to the next phase in our continued development the GCTE is well resourced and strongly committed through its continued partnerships with TAG and OEMS&T as well as its new partnerships with the GTCNC and the GA COT to lead the way in monitoring and improving quality in trauma care to those who live, work and travel through the State of Georgia